

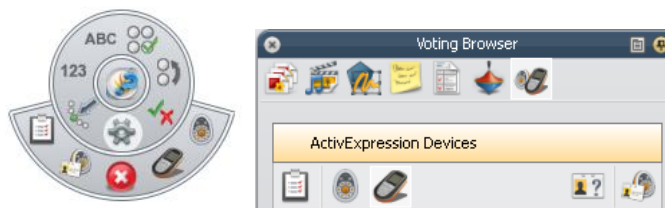
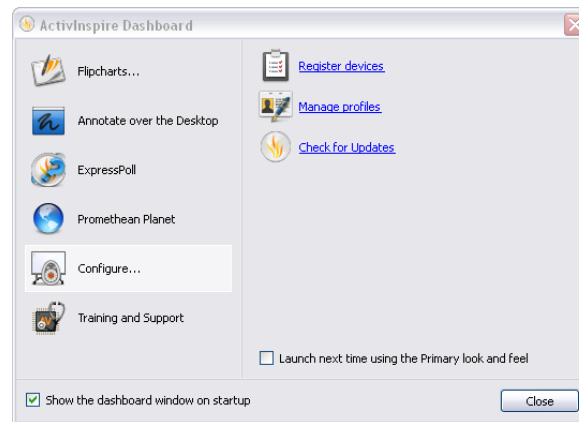
10386us Registering the Activslate in ActivInspire

Applicable to:

Activslate 2.4 GHz,
Activslate 866 / 915 MHz,
ActivInspire

Solution:

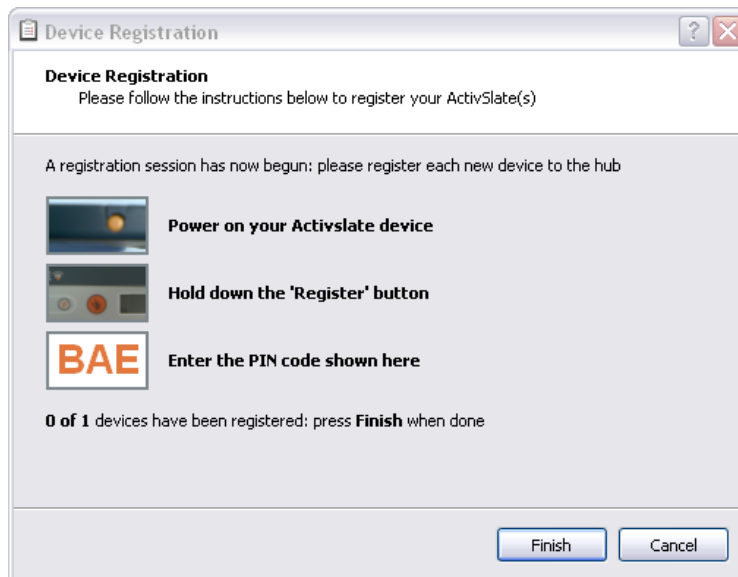
1. Determine what type of slate is being registered, and ensure that the necessary hardware is connected (If unsure, click [Here](#)).
2. Open ActivInspire. Access the Device Registration menu (📄) (This may be done through the Configure tab of the Dashboard, the Actions option on the Express Poll, or the Voting Browser).



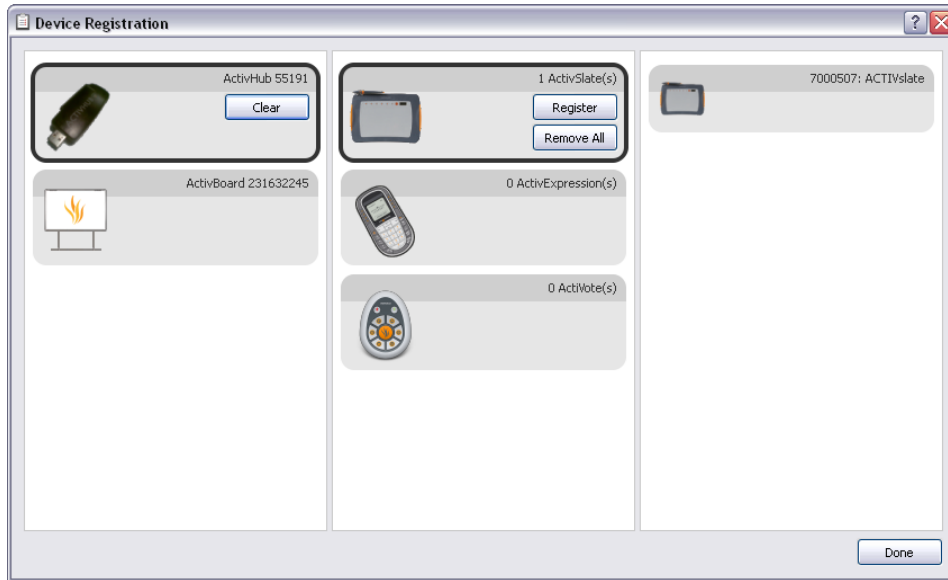
3. Select the appropriate piece of hardware to register the Activslate.



4. Click on the Activslate and click Register.
5. Select the number of devices and click Next.
6. Follow the directions on the screen that follows: Power the slate up, touch the Activpen to the flame icon on the slate, and use the pen to input the given PIN code using the letters at the top of the slate.



7. The process will stop automatically when the specified number of slates have been registered. There should now be a slate registered to the hardware.



8. If the slate is model number PRM-RS1, enable the slate; click on the registered slate followed by the button reading Enable.



The slate should now be registered and should function with the pen as a mouse input.